



**MORE  
DISORDERS  
LESS  
DOWNTIME**



**QSight® 225 MD UHPLC screening system**

  
**PerkinElmer®**  
*For the Better*



**EVERYTHING COMES  
TOGETHER TO DELIVER  
MORE SCREENING**

# The QSight 225 MD UHPLC-MSMS Screening System – designed to support full MSMS workflow



The QSight 225 MD system consistently enables the throughput and productivity you need in your clinical laboratory. Our solution delivers a unique combination of self-cleaning MSMS instrumentation that provides excellent system uptime, a simple three-step method-setup process and a unique dual source design in a compact, easy-to-use design.

- Dual Source technology gives you the capability to set ESI or APCI modes, with two independent probes for true multiplexing without reconfiguring the system
- StayClean™ Source, self-cleaning design for maximum sensitivity and excellent uptime
- Laminar Flow Ion Guide™ for efficient field-free transmission, providing low maintenance requirements
- Designed with class-leading sample capacity for high throughput
- Optimized UHPLC workflows: integrated column switcher to easily switch between applications and runs without replumbing
- Modular Simplicity™ 3Q MD software to acquire, quantify, and report with flexible data viewing options and powerful remote diagnostics
- Published application notes to guide method setup for a variety of clinical applications

Please visit [www.newbornscreening.perkinelmer.com](http://www.newbornscreening.perkinelmer.com) for more information

## QSight 225 MD UHPLC Mass Spectrometer Specifications

<b>Mass Range</b>	5-1500 m/z
<b>Analysis Modes</b>	Q1, Q3, MRM, Time-Managed MRM, SIM, Neutral Loss, Production Ion, Precursor Ion
<b>Dynamic Range</b>	6 orders
<b>Ion Source</b>	ESI/ESI, ESI/APCI, APCI/ESI, APCI/APCI
<b>Interface</b>	Hot Surface Induced Desolvation (HSID)
<b>Nebulizer Gas</b>	Nitrogen/Zero Air
<b>Heating Gas</b>	Nitrogen/Zero Air
<b>Heating Gas Temp.</b>	0-900 °C
<b>Source Light</b>	Yes
<b>Vertical Mount</b>	Yes
<b>Electronics Serviceability</b>	Modular plug and play
<b>Dimensions</b>	50 x 50 x 120 cm (W x D x H)
<b>Software</b>	Simplicity 3Q MD; Service Tool
<b>Remote Access</b>	Yes



Products in this brochure may not be available in all countries. Confirm availability with your local PerkinElmer representative.

## QSight MD UHPLC Pump

<b>Flow Rates</b>	10-2000 $\mu\text{L}/\text{min}$ settable in increments
<b>Flow Precision</b>	$\leq 0.075\%$ RSD
<b>Dimensions</b>	330 x 180 x 540 mm (W x D x H)
<b>Pressure Range of UHPLC Pump</b>	0-1300 bar/18850 psi
<b>Pressure Range of full Screening System</b>	0-1000 bar/14500 psi



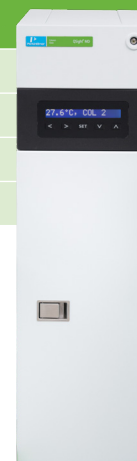
## QSight MD UHPLC Autosampler

<b>Injection Volume</b>	1 to 80 $\mu\text{L}$ in 1 $\mu\text{L}$ increments
<b>Precision</b>	$< 0.5\%$ RSD with 10 or 20 $\mu\text{L}$ loop partial filling
<b>Dimensions</b>	600 x 795 x 770 mm (W x D x H)
<b>Capacity</b>	6 drawers x 2 MTP plates (12 plate capacity) and 3 drawers x 2 Vial plates (6 plate capacity)



## QSight Column Oven MD

<b>Temperature Range</b>	5 $^{\circ}\text{C}$ - 75 $^{\circ}\text{C}$ , with 1 $^{\circ}\text{C}$ increments (cooling is $\sim 18$ $^{\circ}\text{C}$ maximum below ambient)
<b>Accuracy and Stability</b>	Better than 0.1 $^{\circ}\text{C}$
<b>Adjustment Increments</b>	1 $^{\circ}\text{C}$ increments
<b>Capacity</b>	6 drawers x 2 MTP plates (12 plate capacity) and 3 drawers x 2 Vial plates (6 plate capacity)

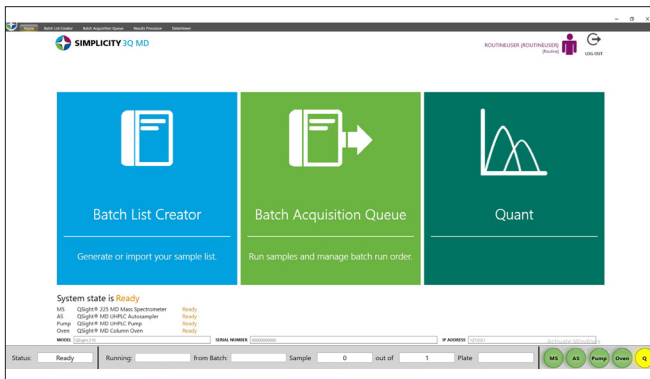


Products in this brochure may not be available in all countries. Confirm availability with your local PerkinElmer representative.

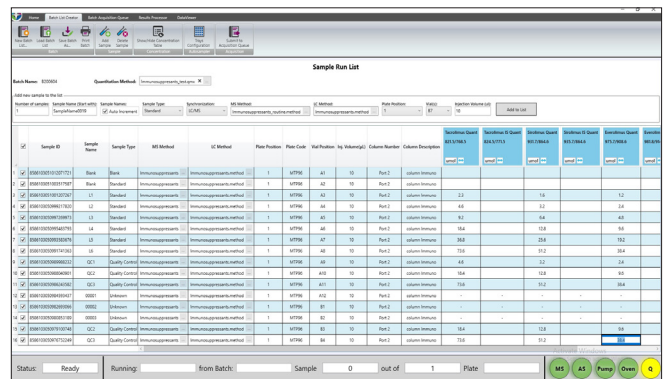
# Simplicity 3Q MD software

With Simplicity 3Q software, it's all about making the QSite instrument simple and easy to use. With a graphical user interface and guided three-step workflow, the software can be up and running – and generating results – right away. This modular software suite is designed for intuitive, straightforward operation, with wizards guiding you through the workflow, from method development to results processing and reporting.

Capable of real-time acquisition of thousands of MRMs per run, with results shown in real time, Simplicity 3Q MD software enables you to monitor data acquisition as it occurs, as well as review results after each run.



Guided three step workflow



Batch list creator with integrated concentration table

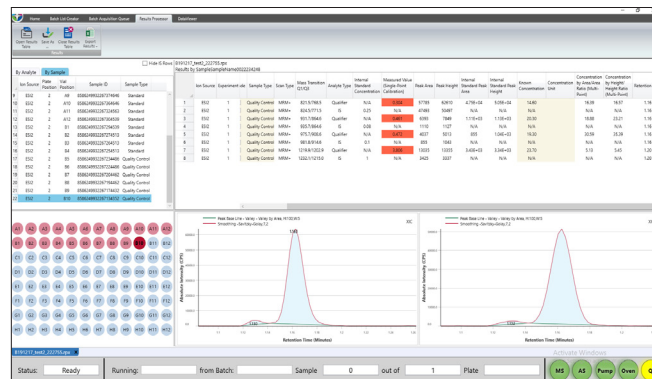
## Simplicity 3Q MD Acquire Module

A great solution for data acquisition, the Simplicity 3Q MD Acquire streamlines acquisition method development and batch acquisition, with high levels of automation. For batch acquisition, it delivers a simple sample editor with an integrated concentration table, and easy table controls.

## Simplicity 3Q MD Quant Module

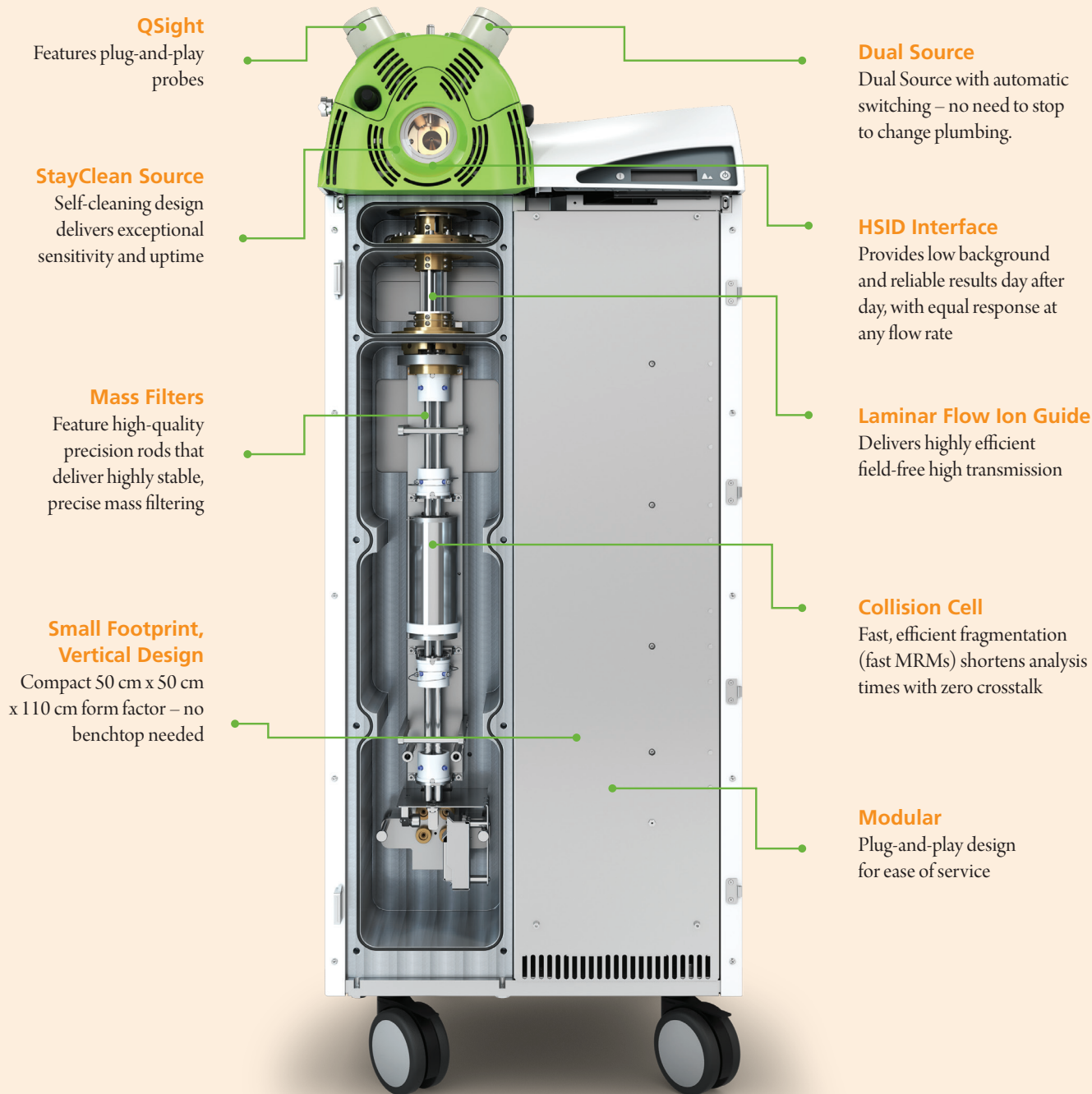
For data analysis and reporting, the Simplicity 3Q MD Quant module quantifies your samples by adjusting the integration parameters in an easy and intuitive way.

The Simplicity 3Q MD Result Processor delivers a live view of processed samples as well as flexible multi-analyte viewing and overlay plotting. It also provides total ion currents (TICs) and extracting ion currents (XICs) for data exploration and evaluation.



Results processor with live view of processed samples and results

# Inside and Out, It's MSMS Done Right



## Q Sight

Features plug-and-play probes

## StayClean Source

Self-cleaning design delivers exceptional sensitivity and uptime

## Mass Filters

Feature high-quality precision rods that deliver highly stable, precise mass filtering

## Small Footprint, Vertical Design

Compact 50 cm x 50 cm x 110 cm form factor – no benchtop needed

## Dual Source

Dual Source with automatic switching – no need to stop to change plumbing.

## HSID Interface

Provides low background and reliable results day after day, with equal response at any flow rate

## Laminar Flow Ion Guide

Delivers highly efficient field-free high transmission

## Collision Cell

Fast, efficient fragmentation (fast MRMs) shortens analysis times with zero crosstalk

## Modular

Plug-and-play design for ease of service



High sensitivity and productivity



High throughput, low maintenance



Compatibility with PerkinElmer assays

For more information on the instrument, the software, and the kits, visit [www.newbornscreening.perkinelmer.com/msms](http://www.newbornscreening.perkinelmer.com/msms)

**PerkinElmer, Inc.**  
940 Winter Street  
Waltham, MA 02451 USA  
P: (800) 762-4000 or  
(+1) 203-925-4602  
[www.perkinelmer.com](http://www.perkinelmer.com)



---

For a complete listing of our global offices, visit [www.perkinelmer.com/ContactUs](http://www.perkinelmer.com/ContactUs)

Copyright ©2020, PerkinElmer, Inc. All rights reserved. PerkinElmer® is a registered trademark of PerkinElmer, Inc. All other trademarks are the property of their respective owners.

148450 (103115)

PKI